

MONTHLY MEMBERSHIP PROGRESS REPORT

District 325 D

Results as of: 5/31/2024

GMT:

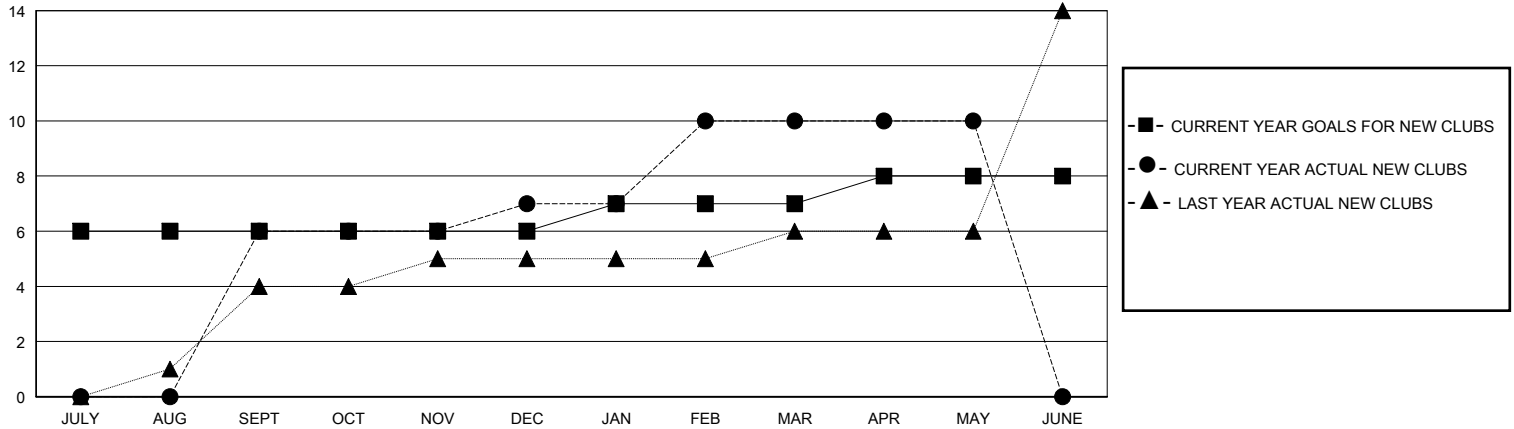
LOCATION NEPAL

GMT CA

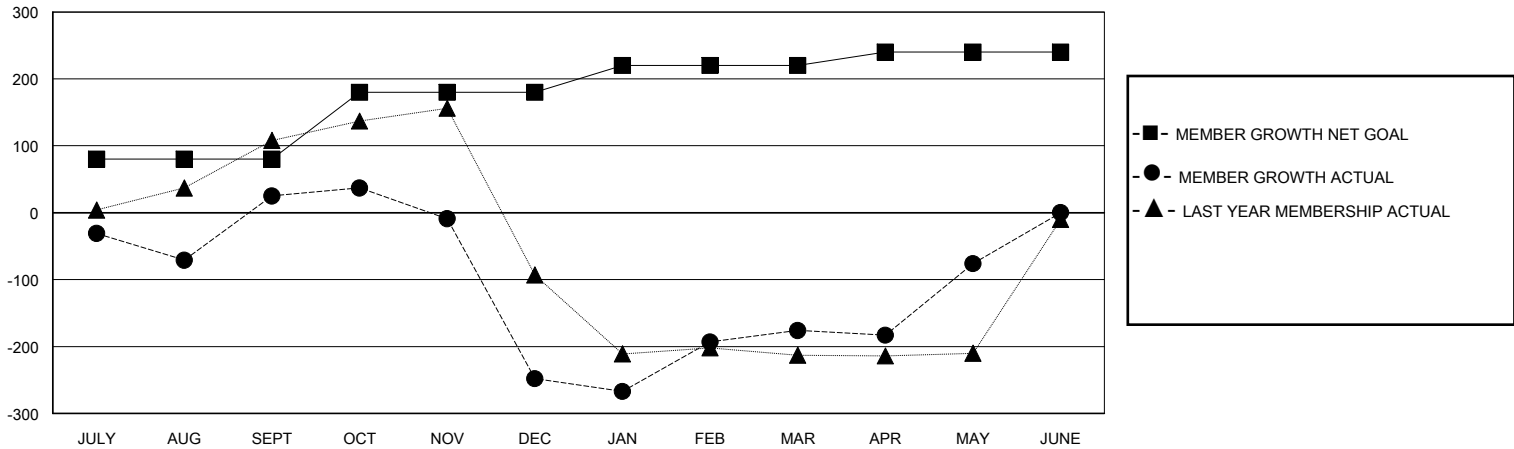
Clubs			
RESULTS FOR 2023-2024			
QUARTER	NEW CLUB GOAL	NEW CLUBS	DROPPED CLUBS
JULY/AUG/SEPT	6	6	5
OCT/NOV/DEC	0	1	4
JAN/FEB/MAR	1	3	3
APR/MAY/JUNE	1	0	1

Members			
RESULTS FOR 2023-2024			
QUARTER	MEMBER GROWTH NET GOAL	MEMBER GROWTH ACTUAL	DROPPED MEMBERS ACTUAL (including transfers)
JULY/AUG/SEPT	80	219	190
OCT/NOV/DEC	100	53	326
JAN/FEB/MAR	40	139	62
APR/MAY/JUNE	20	188	37

GOALS AND ACTUAL NEW CLUBS CUMULATIVE



GOALS AND ACTUAL MEMBERS CUMULATIVE



DROPPED CLUBS: 13	52 CLUBS OF 86 ADDED 1 OR MORE NEW MEMBERS	GENDER DISTRIBUTION	
		MALE 1,415 (66.87%)	FEMALE 702 (33.18%)
DROPPED MEMBERS		TOTAL FAMILY UNIT MEMBERS 1,300	
DECEASED 14	CLUB CANCELLED 251		
OTHER 350		FAMILY MEMBERS PAYING HALF DUES 868	
TOTAL 615		CLICK HERE FOR CUMULATIVE MEMBERSHIP DATA	